



2/590 Pacific Highway Killara NSW

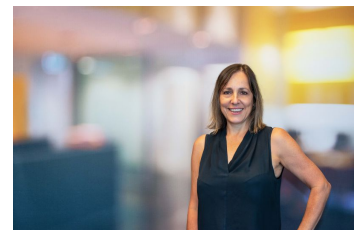
3  2  2 

This sensational luxury apartment is the size of a small house and offers peaceful and quiet living with a variety of indoor and outdoor living areas. Residents enjoy an easy stroll to the train station and convenient access to Gordon's village precinct and the area's prestigious schools. Defined by its generous proportions and utmost convenience, this is the perfect alternative to a freestanding home, ensuring instant appeal to families as well as those looking to downsize.

- * Separate Light-filled living and dining areas
- * Large, covered entertainers balcony
- * Modern kitchen with quality appliances
- * Large bedrooms, master with ensuite and built in wardrobes

Type : Apartment
Price : \$980 per week
View : <https://www.savillsresidential.com.au/lease/nsw/north-shore-upper/killara/residential/apartment/8145779>

[For full version visit the website](https://www.savillsresidential.com.au)



Mara Alexander
02 9416 9393