



B909/89 Bay Street Glebe NSW

1  1 

Arguably Glebe's most sought after location and overlooking Wentworth Park, this stunning apartment is only a short walk to the Fish Markets, Broadway Shopping Centre & Sydney CBD.

Type : Apartment

Price : \$680 per week

View : <https://www.savillsresidential.com.au/lease/nsw/inner-west/glebe/residential/apartment/8133517>

- Ducted Air conditioning throughout
- Gas & dishwasher in kitchen and NBN ready building
- Tiled in kitchen, bathroom & living with carpeted bedroom
- Communal rooftop with gardens and BBQ facility
- Level Access and disability friendly

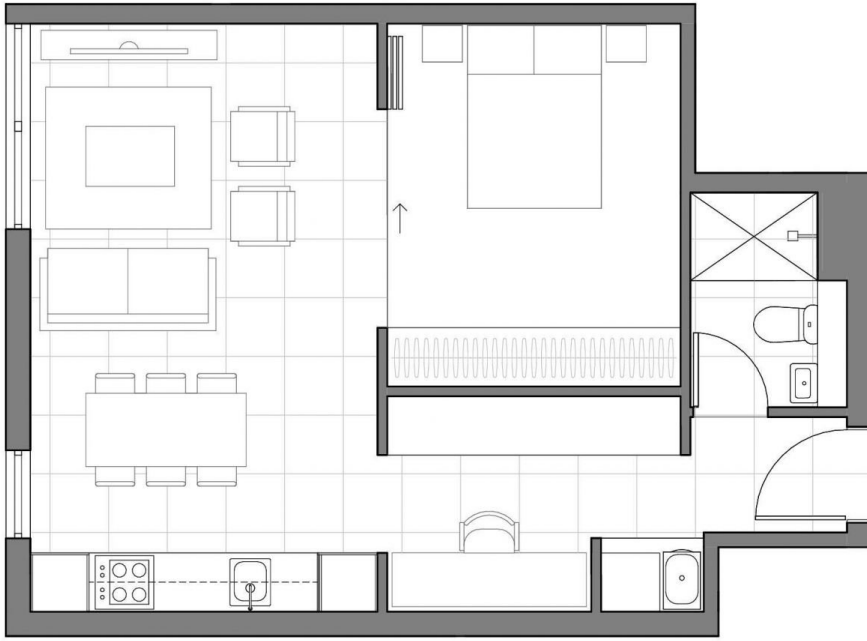
FOR INSPECTION: PLEASE CONTACT NELI - 0429 629 259



Mara Alexander
02 9416 9393

BAY

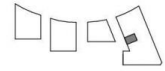
APARTMENT B516
B616
B716
B810
B909
B1009
B1106



1 Bedroom + Study

Internal Area: 47m²

Total: 47m²



MEZZOSYDNEY.COM.AU
1800 788 837