




## 601/563 Pacific Highway St Leonards NSW

2  1  1 

Step into contemporary urban living with this spacious apartment awash with natural light and situated within the prestigious "Pacific Place" secure building, a boutique development with just 17 residences.

**View :** <https://www.savillsresidential.com.au/lease/nsw/north-shore-lower/st-leonards/residential/apartmen/8077433>

Located on the 6th floor, with only one neighbour it boasts stunning views of the Anzac Bridge and enjoys proximity to the vibrant neighbourhoods of St Leonards and Crows Nest. It's also steps away from Crows Nest Metro, which transports you to Martin Place in just 7 minutes.

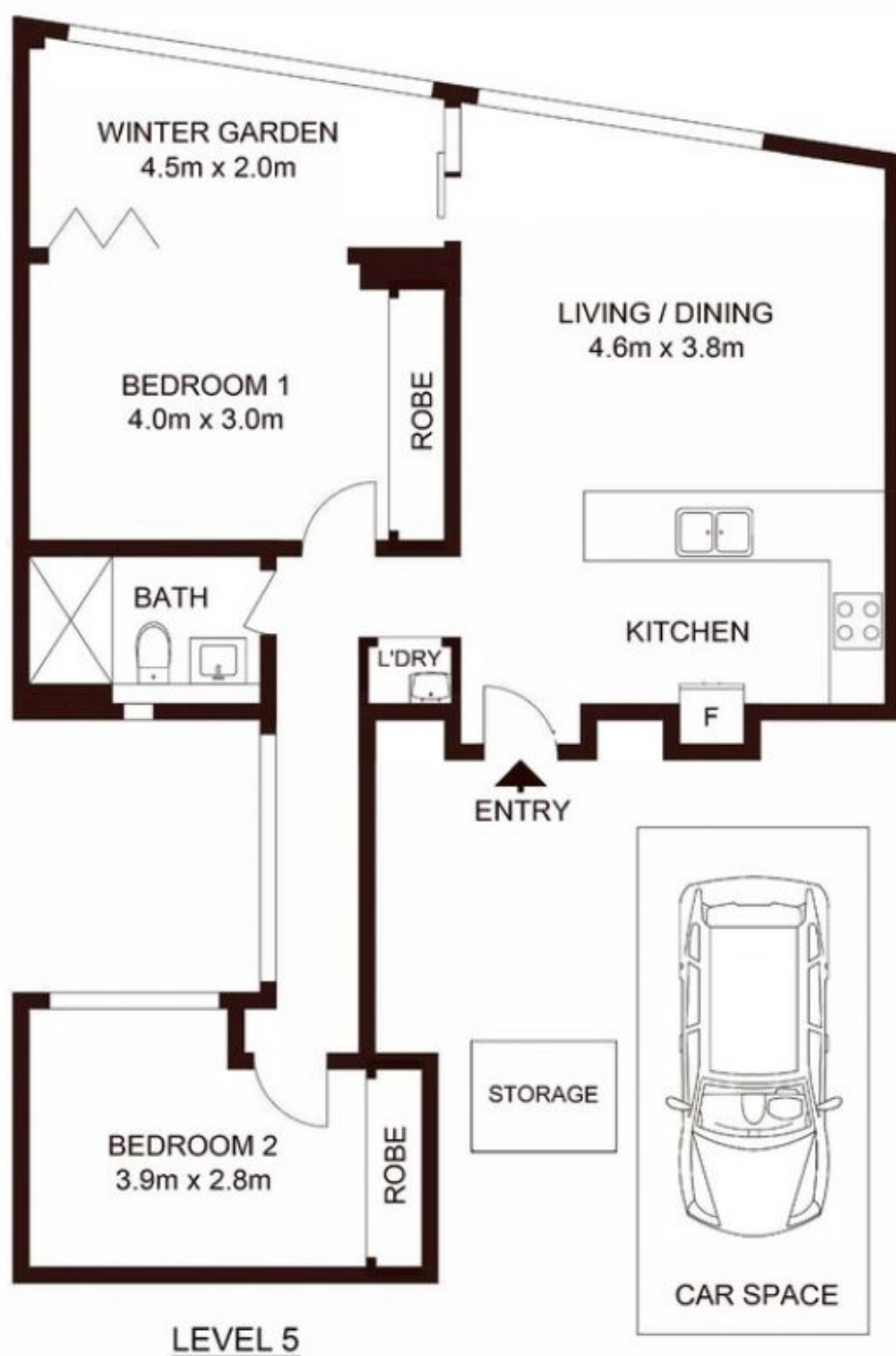
### Apartment Highlights:

? Open-plan Layout: Spacious living and dining areas ideal for relaxation or entertaining.

? Contemporary Kitchen: with Caesar stone benchtop, quality Ilve stainless steel appliances, LG fridge freezer, gas hob, microwave and a dishwasher



**Samantha Manolias**  
02 9416 9393



**Total strata area: 86sqm**

**Total living area: 73sqm**