



**P702/2F Wentworth Park Road Glebe NSW**

2  1 

Arguably Glebe's most sought after location and overlooking Wentworth Park, this stunning apartment is only a short walk to the Fish Markets, Broadway Shopping Centre & Sydney CBD.

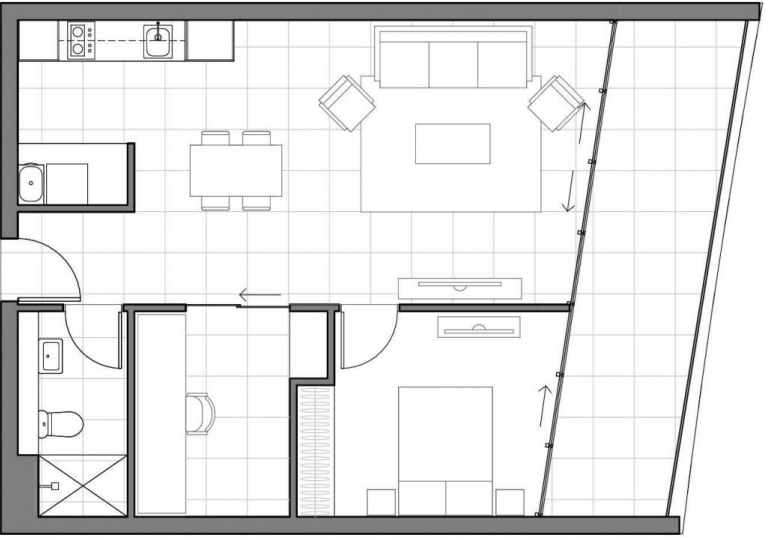
**Price** : \$1,100 per week

**View** : <https://www.savillsresidential.com.au/lease/nsw/inner-west/glebe/residential/apartment/8074218>

- Ducted Air conditioning throughout
- Gas & dishwasher in kitchen and NBN ready building
- Tiled in kitchen, bathroom & living with carpeted bedroom
- Communal rooftop with gardens and BBQ facility
- Large balcony with Northern outlook over Wentworth Park
- Level Access and disability friendly



**Samantha Manolias**  
02 9416 9393



**MEZZO**

**PARC**

APARTMENT P802  
P702  
P802

**1 Bedroom + Flexiroom**

Internal Area:

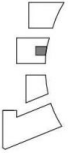
50m<sup>2</sup>

Balcony Area:

14m<sup>2</sup>

Total:

72m<sup>2</sup>



Scale

0 1 2 3m



MEZZOSYDNEY.COM.AU  
1800 788 837