



## 7/12 Macleay Street Potts Point NSW

1  1 

Exclusive Boutique Living In Iconic 'Macleay Regis' Building

Rarely offered eastern apartment in the tightly held 'Macleay Regis' building. Known as one of the finest examples of Art Deco architecture in Sydney, the design of this grand building was inspired by the Rockefeller apartments in New York. Completed in 1939, 'Macleay Regis' was described in the press as an 'exemplar of the American Flat' and was the largest apartment building in Sydney at the time. The striking entrance foyer, with its parquet floors and Austrian Birch columns, provide a remarkable first impression and an indication of the level of craftsmanship throughout.

? Landmark c.1939 Macleay Regis building designed by

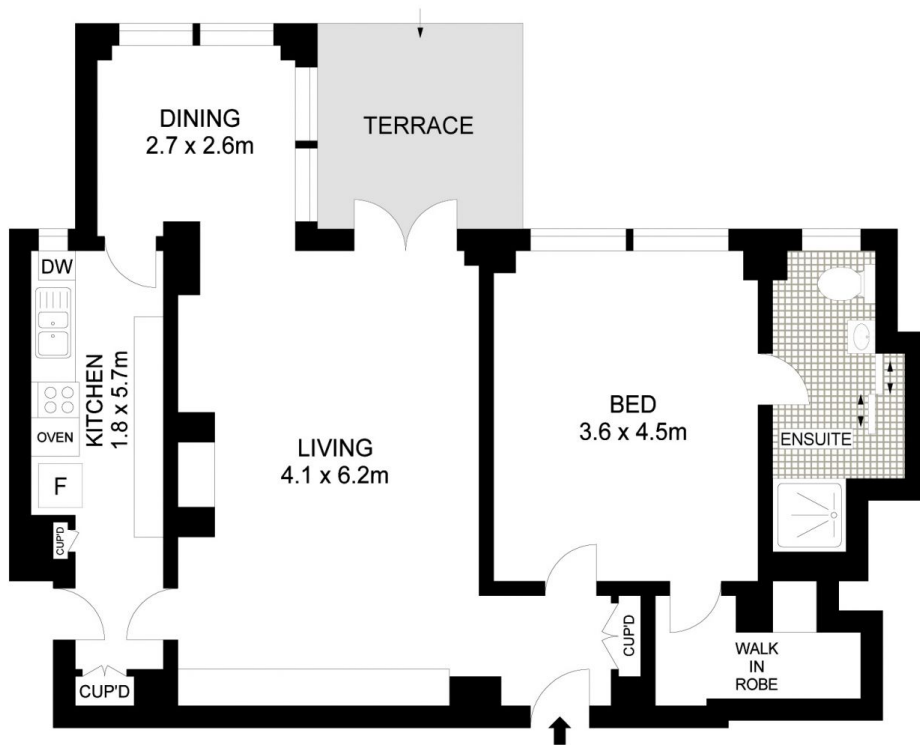
[For full version visit the website](https://www.savillsresidential.com.au)

**Type** : Apartment

**View** : <https://www.savillsresidential.com.au/sale/nsw/eastern-suburbs/potts-point/residential/apartment/5961555>



**Martin Schiller**  
0411 853 406



Scale in metres. Indicative only. Dimensions are approximate. All information contained herein is gathered from sources we believe to be reliable. However we cannot guarantee its accuracy and interested persons should rely on their own enquiries. [www.visionphoto.com.au](http://www.visionphoto.com.au)